



STAMP  
STUDY  
SOCIETY

P. O. BOX 2907 • SPARKS, NEVADA 89432



POST BOY

# N.S.S.S.

*Presents*

## *The Post Boy*

February, 1999

**President:**

Tom Morrissey,  
P.O.Box 7272,  
Reno, NV 89510,  
(702)329-2445

**Vice President**

George Costello  
1065 Union St.  
Sparks, NV 89434  
(702) 331-7574

**Secretary/Editor**

Bill Brew  
2333 Rodney Circle  
Reno, NV 89509  
(702) 786-8071

**Treasurer**

Jerry Stanfield  
4285 Mira Loma Dr.,  
Reno, NV 89502  
(702) 825-1350

**Directors:**

Dick Dreiling  
35 Mc Lemore Ct.,  
Sparks, NV 89434  
(702) 425-0623

Dan Forgues,  
4526 Eagle Mountain Dr.,  
Sparks, NV 89436  
(775)626-8223

Ed Hartley  
1285 Baring Blvd., #306  
Sparks, NV 89434  
(702) 626-8513

Jim Ringer  
605 E. Huffaker Ln.  
Reno, NV 89511  
(702) 853-3137

Dr. John Sande  
4284 Ross Drive  
Reno, NV 89509  
(702) 747-5778

Al Shay  
2930 Outlook Dr.,  
Reno, NV 89509  
(702) 825-8034

George Costello is recuperating in the Veterans Hospital and doing very fine. He should be home sometime next week. Very happy to give this good report.

There are cheers for one of our own. Reno music maker, Al Shay, was inducted in to the World of Entertainers Hall of Fame. Al is nationally known and has devoted his life to music-to composers, lyricists and players. Congratulations, Al. Al has been a great supporter of NSSS since the mid 1970's. One of the few active members, since NSSS was organized.

Well, we made it back from a ten-day cruise of the Caribbean Islands and it was a great trip. We visited Tortola, Martinique, Barbados, St. Lucia and St. Thomas Islands. At each island we tried to visit the post office and mail a post card from each one. It wasn't that easy. We still haven't received cards from St. Lucia or Tortola. At Tortola, British West Indies, the Postal Clerk was very friendly and provided me with the items I requested. Then, she put them in an envelope and then taped the items into a brochure on the British West Indies. This was to prevent damage to the stamps. Very thoughtful. At Martinique, the service was hit and miss. I asked for several different stamps, singles and plate blocks plus two for the post cards. He had no trouble selecting the items until I asked for two stamps for the post cards. Then he had to asked for help for these. Not sure what the problem was on that. In Barbados, the postal service was more organized and we managed to pick up a recent set of Ships Definitive Stamp issue of 1994. The Post Office was located right at the shopping center at the dock. The had all the recent issues displayed, just as they did at Tortola. St. Lucia was a little difficult, as the philatelic person was on lunch. The clerk had a little difficulty in providing items I wanted, but it turned out okay. St. Lucia was the high point of the

*"To promote and enhance the hobby of Stamp Collecting"*

cruise. This was where I was stationed for a year or so during WWII. So, we hired a taxi and drove to the south end of the island, where Beane Field was located. We visited the lighthouse near the base and it provided us with a fantastic view of the Atlantic Ocean on the left and The Caribbean Ocean on the right. Of course, all the evidence of Beane Field is gone, except the runways and the name has been changed. We did have a nice visit and saw most of the island, with its banana plantations. Bananas are the main export. They are shipped to England. We could see the Petite Piton and Gros Piton, the two mountains that are depicted on Scott No.'s 40 and 122. From St. Lucia we visited St. Thomas. The Post Office was, of course, U.S.A. They had issues from a way back displayed on the walls. There were issues displayed that our local post office have long since sent back to Washington. So, I managed to pick up a few items that I have missed.

The big problem was the shortage of time at each port. St. Lucia was the shortest and I didn't have the opportunity to visit the local stamp dealer which I have contacted in years past. It would have been nice to have less ports and more time at each one. There is a lot to see at each of these islands. We avoided the tourist stores, as all the items they sell are from China and are poor quality. In St. Thomas there must be a hundred dealers in diamonds and jewelry. It was our policy to try to locate the stores where the locals buy their goods so as to have something that represented the Island and its people, but, there just wasn't enough time. The people are poor for the most part at most of the islands. This provided us with unusual stories. In Barbados, we noticed the small houses, approx. 15 by 20 ft, were mounted on rocks, pieces of cinder blocks and other objects. It seems the house is owned by the tenant and the property is owned by someone else. So, if there is a disagreement between the two, the house owner just picks up his house and moves it to another land owner. This is done on a Sunday and in about 6 hours. So, Sundays are moving days.

It was a very nice cruise, but we were happy to get back.

The plans for NEVPEX 99 are on track and it looks as if this could be another successful show. As more information is available, it will be announced in the Post-Boy.

A tour of the local post office is scheduled for Feb. 10 or 12 or 13th at 7 p.m. Desni Zipka will let us know when he returns from Las Vegas. This should be a very interesting tour, as it will provide us with a view of the Post Office in operation.

The next Board Meeting will be held at the Sparks Museum on Wed. Feb. 10th at 11 a.m. Members are invited to attend, if they so desire.

The opportunity to pick up a few more Auction Bucks was overlooked in the January issue of Post Boy, so, let's do that now.

The following 5 questions refer to the covers, and other information about Pres. Roosevelt, displayed on the next page. 40 Auction Bucks for each correct answer.

The auction bucks for each correct was doubled to cover the questions missed in the Jan. issue

1. How many terms of office was Pres. Roosevelt elected to and what were the years?
2. Where did he die?
3. What was the date of his birthday?
4. What infamous date occurred during his term of office?
5. What issued stamp was designed by Pres. Roosevelt?

FIRST DAY OF ISSUE



LIBRARY AT ROOSEVELT'S  
HYDE PARK, N.Y. ESTATE

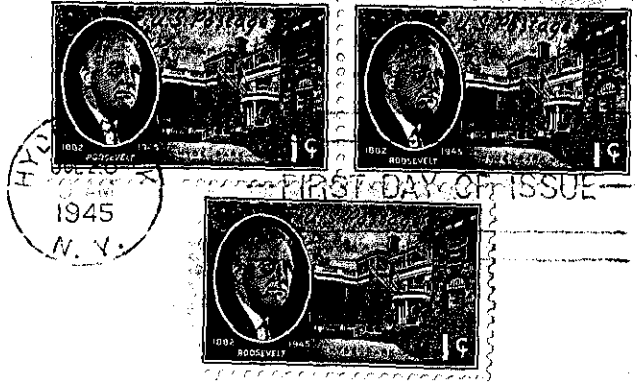


# In Memoriam

FRANKLIN DELANO ROOSEVELT

"ALL THAT IS WITHIN  
ME CRIES OUT  
TO GO BACK TO  
MY HOME  
ON THE HUDSON"

*McGraw-Hill*



FIRST DAY OF ISSUE

FIRST DAY OF ISSUE



THE HUMBLE COTTAGE AT WARM SPRINGS, GA.  
WHERE THE PRESIDENT DIED APRIL 12, 1945

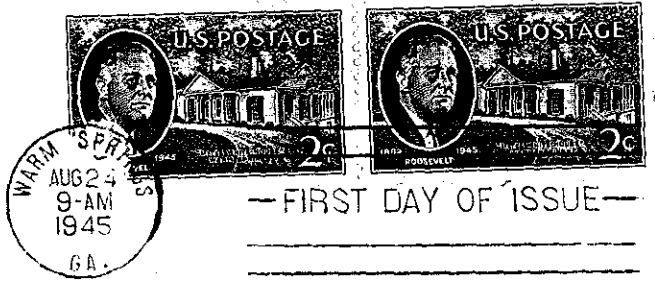


# In Memoriam

FRANKLIN DELANO ROOSEVELT

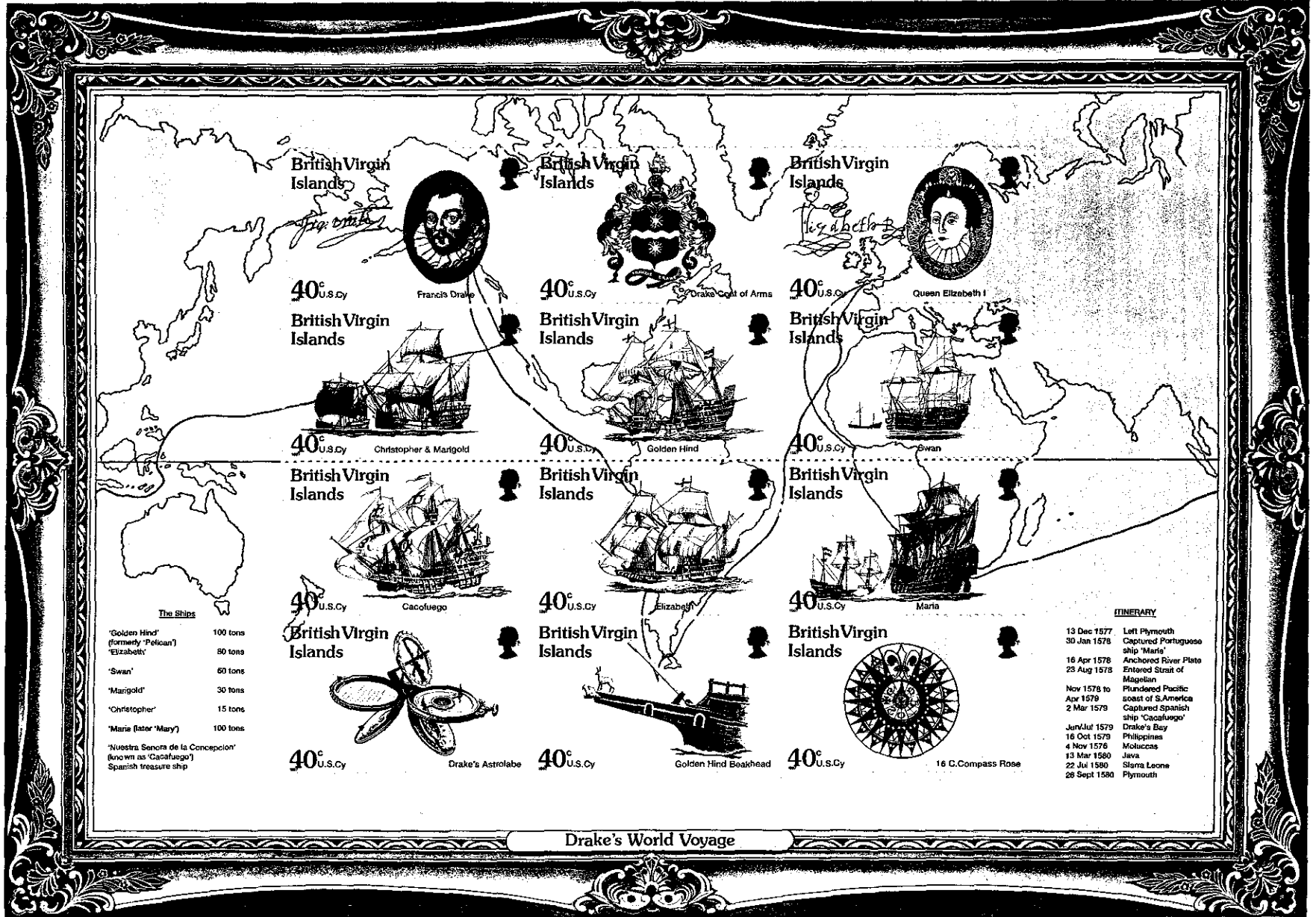
"AMERICA WILL  
NOT FORGET THESE  
RECENT YEARS"

*McGraw-Hill*



FIRST DAY OF ISSUE

Mrs. Helen S. Dietzius  
2459 Polk Street  
SAN FRANCISCO 9, CALIFORNIA



British Virgin Islands



Francis Drake

British Virgin Islands



Drake's Coat of Arms

British Virgin Islands



Queen Elizabeth I

40° U.S.Cy

40° U.S.Cy

40° U.S.Cy

British Virgin Islands

British Virgin Islands

British Virgin Islands

40° U.S.Cy

Christopher & Marigold

40° U.S.Cy

Golden Hind

40° U.S.Cy

Swan

British Virgin Islands

British Virgin Islands

British Virgin Islands

40° U.S.Cy

Cacafuego

40° U.S.Cy

Elizabeth

40° U.S.Cy

Maria

British Virgin Islands

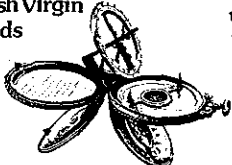
British Virgin Islands

British Virgin Islands

**The Ships**

'Golden Hind' (formerly 'Pelican')	100 tons
'Elizabeth'	80 tons
'Swan'	60 tons
'Marigold'	30 tons
'Christopher'	15 tons
'Maria (later 'Mary)'	100 tons
'Nuestra Señora de la Concepción' (known as 'Cacafuego') Spanish treasure ship	

40° U.S.Cy



Drake's Astrolabe

40° U.S.Cy



Golden Hind Beakhead

40° U.S.Cy



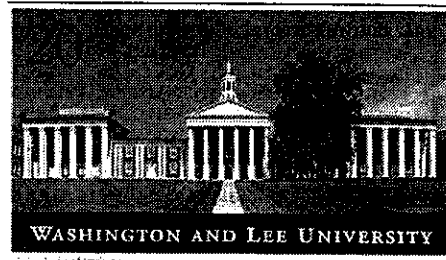
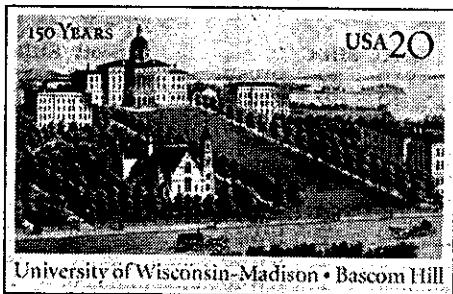
16 C. Compass Rose

**ITINERARY**

13 Dec 1577	Left Plymouth
30 Jan 1578	Captured Portuguese ship 'Maria'
16 Apr 1578	Anchored River Plate
23 Aug 1578	Entered Strait of Magellan
Nov 1578 to Apr 1579	Plundered Pacific coast of S. America
2 Mar 1579	Captured Spanish ship 'Cacafuego'
Jun/Jul 1579	Drake's Bay Philippines
16 Oct 1579	Moluccas Java
4 Nov 1579	Moluccas Java
13 Mar 1580	Siam Leone
22 Jul 1580	Plymouth
28 Sept 1580	Plymouth

Drake's World Voyage

The Historic Preservation Postal Cards honor U.S. Colleges and Universities. The 250th anniversary of Washington and Lee and the 150th anniversary of University of Wisconsin. Un. Of Wisconsin will be issued on Feb. 5th and W. & L. will issued on Feb. 11th.



### U.S. COLLEGES AND UNIVERSITIES HONORED ON HISTORIC PRESERVATION POSTAL CARDS

YEAR	DENOMINATION / SUBJECT	KRAUSE-MINKUS No.	SCOTT No.
1989	15¢ Healy Hall (Georgetown University)	PC124	UX128
1990	15¢ Stanford University Quadrangle	PC143	UX150
1991	19¢ University of Texas Medical Branch	PC149	UX155
1991	19¢ University of Notre Dame	PC152	UX157
1991	19¢ University of Vermont	PC153	UX159
1992	19¢ University of Chicago	PC155	UX161
1992	19¢ Willamette University	PC156	UX162
1993	19¢ College of William & Mary	PC162	UX167
1993	19¢ University of North Carolina	PC165	UX170
1993	19¢ College of the Holy Cross	PC166	UX171
1993	19¢ Illinois College	PC167	UX172
1993	19¢ Bowdoin College	PC168	UX173
1993	19¢ Wittenberg University	PC170	UX175
1996	20¢ St. John's College	PC257	UX262
1996	20¢ Princeton University	PC258	UX263
1997	20¢ City College of New York	PC275	UX280
1998	20¢ University of Mississippi	PC285	UX290
1998	20¢ Girard College	PC287	UX292
1998	20¢ Northeastern University	PC293	UX298
1998	20¢ Brandeis University	PC294	UX299
1999	20¢ University of Wisconsin Bascom Hill	PC295	-----
1999	20¢ Washington and Lee University	PC296	-----



GUESS WHO? (ST. LUCIA)

The British Virgin Islands have a colorful history of explorers, marauding pirates and competing national interests. Originally from South America's Orinoco Basin, these Amerindians had migrated to the Lesser Antilles by canoe and first settled in what is now the British Virgin Islands at about a thousand AD. When Columbus sailed past the Virgin Islands in 1493, he didn't report seeing Indians here, but was nonetheless impress with the area's untouched beauty, and name them in honor of Legendary St. Ursula and the 11, 000 martyred virgins.

Buccaneers like Edward Teach, alias Blackbeard, Jost Van Dyke, Norman and other notorious cut-throats though, found the Virgin Islands a haven and reputedly used them to launch their raids. In 1595, the famed English adventurer Sir Francis Drake, sailed down the channel which now bears his name, in order to launch a raid on the Spanish Armada in Puerto Rico.

It wasn't until 1648 when a group of Dutch colonists landed at Soper's Hole on Tortola's West End, that the island saw its first European settlement. These early Dutch settlers were soon supplanted by the English (the islands were annexed by England in 1672) who established plantations and developed the island's lucrative sugar and rum industries.

By the mid 19th century, the majority of the islands' planters had left the British Virgin Islands and returned to England. the abolition of slavery in the British West Indies in 1834 and several years of unfavorable weather conditions had made the plantations way of life too difficult to carry on. After 1865, much of the former plantation property reverted to the ownership to he former slaves, who largely lived off their land and the sea.

Until 1950, when a locally elected legislative council was re-instituted B.V. Islanders were ruled by A British administrator and had little say in the running of their own affairs. Today, B.V.I. is run by Legislative and Executive Councils and is headed by a chief minister selected from the ruling party. A British governor remains the Queen's personal representative and head of the Executive Council.

The following sheet of a recent issue show the calender of events that took place in the settling the British Virgin Islands.

---

Put your answers in the following spaces and cut from page.

1. \_\_\_\_\_
2. \_\_\_\_\_
3. \_\_\_\_\_
4. \_\_\_\_\_
5. \_\_\_\_\_