

P. O. BOX 2907 • SPARKS, NEVADA 89432

N.S.S.S. meets on the 2nd and 4th Sat. of each month at 10:00 a.m.
in the Sparks Railroad Museum at Pyramid and Victorian Ave.

N.S.S.S.



POST BOY

Presents the

Post Boy

September, 2000

President:

Dick Dreiling
35 Mc Lemore Ct.,
Sparks, NV 89434
(775)425-0623

Vice President

Jim Ringer
605 E. Huffaker Ln.,
Reno, NV 89511
(775)853-3137

Secretary/Editor

Bill Brew
2333 Rodney Circle
Reno, NV 89509
(775) 786-8071

Treasurer

Michael McAuliffe,
4820 Pinespring Dr.,
Reno, NV 89509
(775)826-1848

Directors:

Nadiah Beekun
560 Howard Dr.,
Sparks, NV 89434
(775)355-1461
Stan Cronwall
10000 Blue Spuce Dr.,
Reno, NV 89511
Frank Fey
2601 Monterey Circle,
Reno, NV 89509
(775) 826-1476
James S. Goodwin
50 E., Quail St.,
Sparks, NV 89431
(775) 358-7781
Ed Hartley
1285 Baring Blvd.,
PMB #306
Sparks, NV 89434
(775) 626-8513
Al Shay,
2930 Outlook Dr.,
Reno, NV 89509
(775) 89509
Brandon Wimbley (Jr.Rep)
3965 Pargue Verde,
Reno, NV 89402

George Costello sent in the following letter of resignation, which N.S.S.S. regretfully accepts. *George* has distinguished himself in many contributions to our club, especially with the *Junior Program*. He will be active and available as time permits. N.S.S.S. thanks him for all the work he has accomplished for us.

To: Members, N.S.S.S.

From: George Costello, VP Nevada Stamp Study Society

Date: August 6, 2000

It is with deep regret that I resign my position as an officer at N.S.S.S. It has been very rewarding and enriching experience. However, This latest brush with death has left me shaky.

Friendships I've made and you know who you are, will be cherished. The common bond for all of us is the love of collecting stamps and showing to all. It has been a distinct pleasure knowing you and sharing this wonderful experience.

Unless more miracles come my way - I believe I've used up my quota - I will spend the preponderance of my time cleaning out what is left of my stamp collection and being with my family and friends.

Please feel free to call or drop by for a short visit. Talking, other than briefly, taxes me.

With Love, respect and admiration for all of you, I remain.

George Costello

George has scheduled a program for the 2nd Sat. in September. He asks that every member attending to bring a magnifying glass. His program will be on cancellations. Nadiah Beekun will do the presentation for George. Plan to attend.

"To promote and enhance the hobby of Stamp Collecting"

Tom Morrissey has received an invitation by the Post Office for a guided tour of the Postal Facilities on Vassal. This will be sometime in October, as October is Stamp Collecting Month. They would like to know how many members and their guests would like to take this tour. If you are interested, please contact Tom so a count can be presented to them. 329-2445.

In case you missed it, Kieth Carvin presented a very fine program on Cancellations from Sweden. He explained, with the use of a map of Sweden, the different areas or sections from which each cancellation emanated. For those with Swedish ancestry and those that collect Sweden, the program added much to their interest in this country. For others it was an inspiration to begin collecting Swedish philately.

Some of the subjects that can be classified as Philatelic Items are really not Philatelic Items. They fall under the classification of Cinderella's. These are items that have a distant connection with the Philatelic field. Such as: Christmas Seals; Easter seals; Philatelic show labels; pictures of stamps, generally errors; stamps associated with some fund raising project or stamps which are really labels, but are posted on the cover at various locations. There are collectors who desire to collect these items, mostly in relation with the specialized field of their collection. They add to the depth of research that they give to their collections. Below are some samples of Cinderella's:



Philatelic News

Just recently the USPS issued an a set of four designs of the Space Achievement and Exploration. There were released at the World Stamp eXpo 2000. Two were \$3.50 value and two of \$11.75 value. They are holographic stamps and round in design. The first stamp issued by the USPS with such a design. The holograms are attached to the stamp with a pressure sensitive glue. It has a water soluble barrier layer. This will allow the hologram to float free from the stamp when it is soaked. Thus, when t water was applied, the design and value were wiped out, you might say.

The purpose of this to prevent the stamps to reused, but the collector will have a very hard time soaking the stamps off of a cover as the entire stamp would not be there. It is recommended that if you receive a cover with these holographic stamps on it, do not soak the cover in water, but keep it as an entire.

Of course, if you buy the stamps in mint condition and keep them that way, you will have a fine specimen to put in your album. Just don't get them near the water.

More Philatelic News

In a recent discussion with USPS Director of Stamp Services Terry McCaffrey announced, or suggested, but not officially confirmed that the next hike in stamp prices will be to \$.34. Also, there has been too much politics in the Stamp Advisory Committee in suggesting subjects for the future stamps. There are a number of bills pending in congress. A recent person was recently placed in for consideration is one for Ava Gardner. He stated that the numbers of stamps considered for issue may reach an all time high, similar to 1948. The philatelic collectors of the U.S. have been quite discouraged over the excess of issues in the last 4 or 5 years, so a change in attitude by the USPS may be welcomed, to say the least.

The Claude Pepper stamp will soon be issued in Washington, D.C. This is a change from Florida, where Sen. Pepper was its Senator.

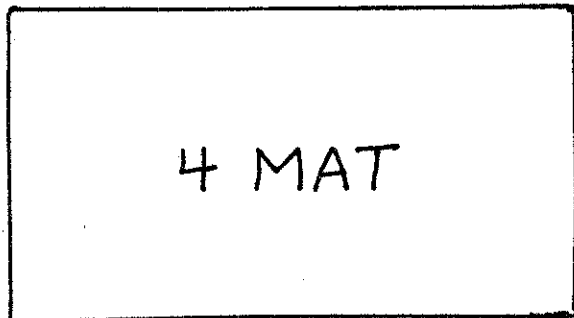
It is guessed that the change was to take advantage of the elections coming up this fall, since the rate will be \$.33 and the new rate will take place in Jan.2001. Possibly to remind the Seniors of this country of the work Dem. Senator Claude Pepper did for them.

The answers to the jumble quiz for the month of August is as follows:

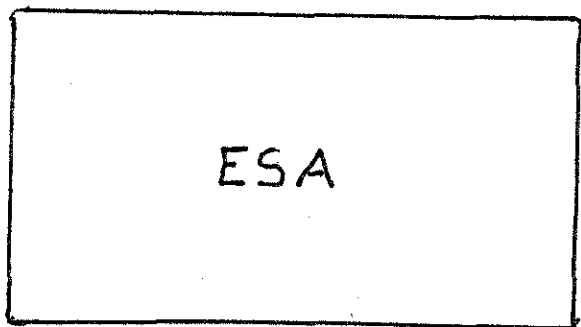
1. Condition.
2. Magnifying Glass.
3. Stamp Tongs.
4. Postage Due.
5. Registration.

For this month the following information boxes are shown below. By viewing the box and deciphering the meanings, you will come up with the correct answer. The award of 20 Auction Bucks for each correct answer will be yours for the big November auction. The first one is an example with correct answer below it.

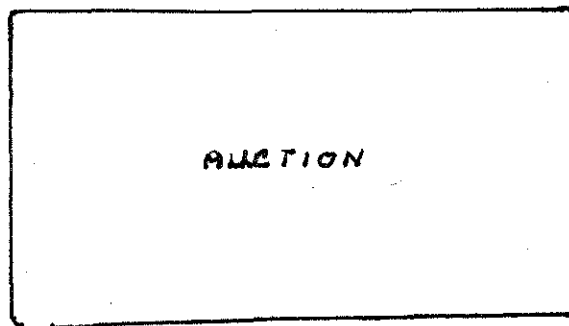
Have fun.



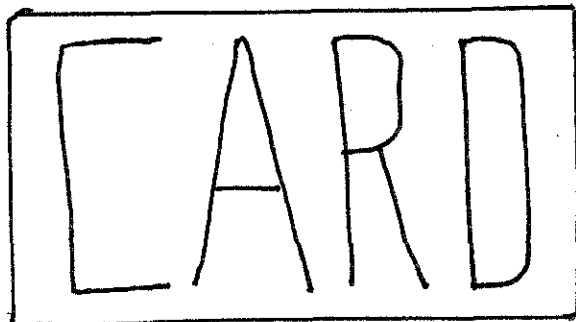
FORMAT



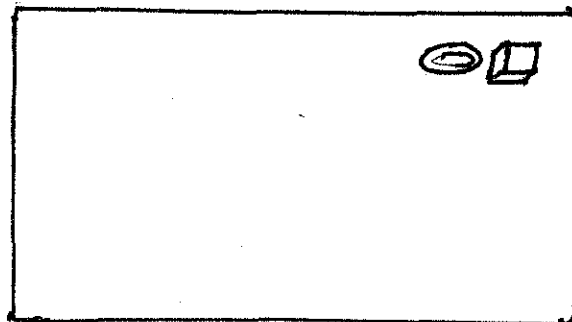
1.



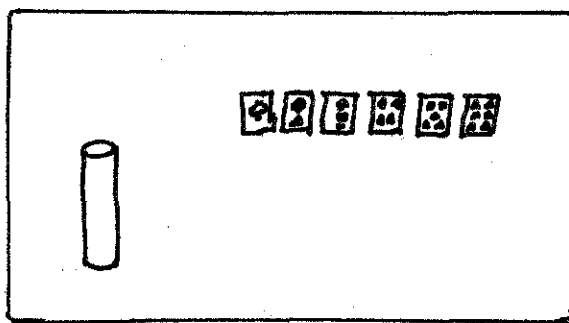
2.



3.



4.



5.

The following members have been selected or volunteer for the next years Officers and board members:

Vice President:	Jim Ringer.
Sectry/Editor;	Bill Brew
Board Member:	Nadiyah Beckun.
	Stan Cronwell

Our staff is now back to normal and ready to go for a great year. Good Luck.

Great Britain has three islands that are prominently tied to this country and recognized in the catalogs. There are many more, but these three are generally listed following Great Britain. They are Guernsey, Isle of Man and Jersey. The stamps from

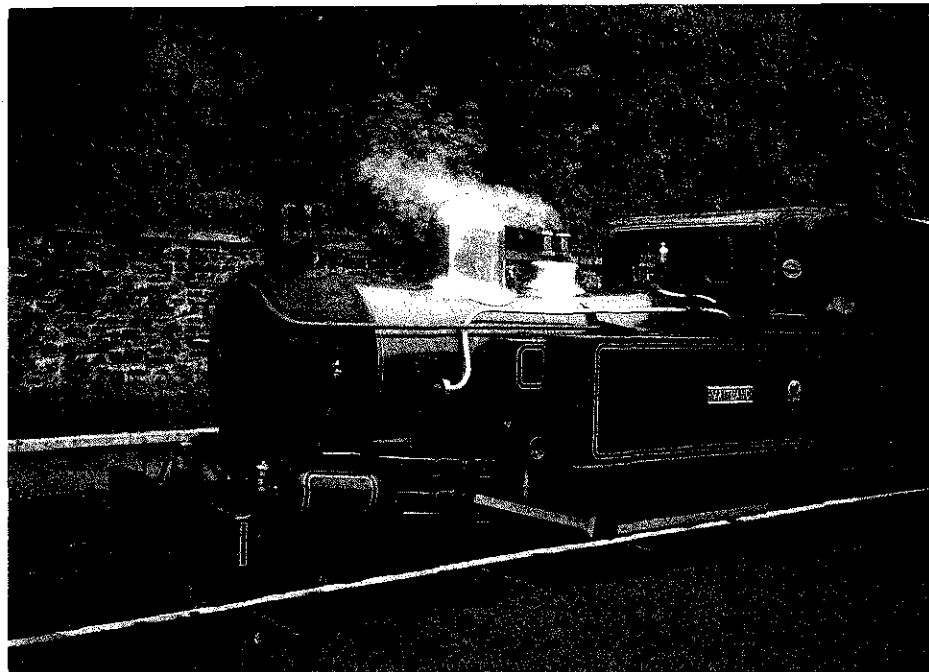
these countries, usually, refer to the history, buildings, events etc, that deal with its own country. Some of the British issues are shown, at times, but for the most part the subjects are about that specific country.

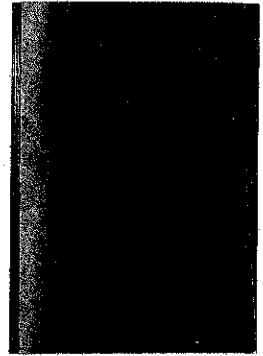
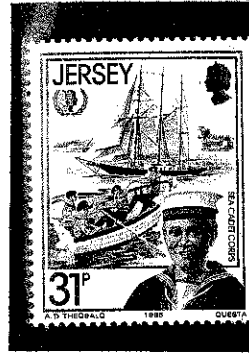
The subjects are beautiful and interesting. In our visit to the Isle of Man, we found some trains as subjects. Much to our surprise, one of the stamps subject was of an engine which pulled the train on which we were aboard. So I took pictures of it. The little bugger could pull 5 cars very smoothly, except on the slightest of grades, then it had to Chug-a-long. We could of walked faster, but it was fun.

Jersey and Guernsey belong to the Channel Island group. They lie in the NW coast of France. Jersey still belongs to England, but Guernsey and its dependencies are independently governed. The Isle of Man lies all by itself in the Irish Sea. This island is famous for the Manx tailless cat. They roam the streets looking for tailless mice. Also, we found the greatest invention. Hot dogs in the middle of a solid bun. No drip. They also mine lead and iron. Fishing, (kippers, scallops) and tourism are the main occupation. Now you know where all those kippers and scallops come from.

Jersey and Guernsey are noted for their cows. The distinct markings on those cows separate them from the average breed.

Below are some examples of stamps issued by these countries.





Spaces for the answers to this month's quiz. Each correct answer receives 20 Auction Bucks Auction. Good Luck.

1. _____
2. _____
3. _____
4. _____
5. _____

Dues were due in the month of August. Please be sure you are caught up to date with them. It is \$17.00 for an individual for the year and \$20.00 for the family rate. Send or give the dues to Michael McAuliffe. Thank you.