



Post Boy



N.S.S.S. meets the 2nd & 4th Saturday of each month at 10:00 am in the NNMC at 1855 Oddie Blvd. in Sparks

<http://home.earthlink.net/~renostamp/>

Volume 44, Issue 11

November 10, 2012

Nevada Stamp Study Society

Board of Officers

President:
Stan Cronwall

Vice President:
John Walter

Secretary/Editor:
Casey Macken

Treasurer:
Terri Edwards

Directors:
Charles White

Harvey Edwards

Paul Glass

Jean Johnson

Nadiah Beeken

Junior Representative

Travis Fey

Editor's Byline

Be like a postage stamp. Stick to one thing until you get there.

-Josh Billings!

Casey Macken
Secretary/Editor

I was working on my exhibits for next year and found out that John Lennon collected stamps as a kid and that his album is in the Smithsonian. It makes me wonder, who will be the collectors of tomorrow. Robert Martin has proven that

continued on page 2

Twentieth Century - but Limited by "Napoleon" napoleon@voyager.net

In 1900, France issued the Liberty, Equality, Fraternity stamps and started using many new cancel formats. Some literature on French cancellations stops naming (Type 16, Type of 1885, etc.) cancels at this point. This article reviews a few of the more interesting ones from the early 20th century.

By this time, France had settled on what would be its long term use of the term *affranchissements*. Earlier this term appeared in circular date stamps when paying a fee for some special service. Starting in 1922, precancels have *AFFRANCHts* in a line between two semi-circles. Two stamps were issued one on the Liberty, Equality, Fraternity issue and the other on the later rectangular Liberty and Peace issue. The Liberty and Peace stamp existed in both ordinary and precancel form; the used precancel is worth about forty times the ordinary stamp.

The railroad cancel post shows the 20th century large wavy-edged, *ondule*, railpost cancel. The next article in this series will have more information on *ondules* and other railpost cancellations. There is an octagonal cancel for overseas mail, in this case going from Le Havre to New York. The mail was serviced by postal brigade E, for stamps canceled with triangles, here's much of the story.

INSIDE THIS ISSUE

- 1 Editor's Byline
- 1 Twentieth Century – but Limited by “Napoleon”
- 2 Collecting Stamps and Memories by David Frye
- 7 Advertisements
- 8 Post Boy Quiz

the elementary kids love stamp collecting and we know by the number of people who show up for our club that the hobby is not dead. So if it is not my nieces who will we pass on our collections? But the future can wait because the holidays are coming. Is everyone stocking up on supplies for Thanksgiving and Christmas?

I hope all enjoyed the presentations by Steve Foster, John Walter, John Wetterling and Jean Johnson. They were great and our thanks to our presenters. Do any of you have any interesting philatelic items you would like to show? Sign up for next time with Jean. It was great to see an actual error sheet of The Legends of the West.

The first meeting in November is Auction Bucks auction. Bring your White Elephant gift and your auction bucks to bid on what is there. There are cards in the penny box if you would like to bring alcohol as an auction item. There are some really good gifts. I spent several thousand dollars in Auction bucks picking up trinkets for Christmas last year.

The Christmas party is December 1st, at the Washoe Lodge on Peckham at 6pm. Remember to bring your own silverware, plates and glasses as well as a side dish and a \$10 gift wrapped. Also, if the gift is for a man, woman or philatelic please note that on the tag.



John Wetterling
presenting

Collecting Stamps and Memories

by David M. Frye

When I was a boy growing up in Lebanon, Pennsylvania (17042), I knew where all of the local post offices were and whether they were close enough for me to get to them on my bicycle. Lebanon's downtown post office was close enough, but I never thought to ride my bike in town. So my favorite post office to visit to buy stamps was the Cleona Post Office (also 17042). I could ride the two and one-half miles along the winding two-lane roads through the countryside, past the local dairy, by the undulating cornfields, to the red brick post office. I don't remember the face of the postmaster, but I do recall, fondly, that he didn't mind taking out all of his stamps when I asked, "What stamps do you have?" He would show me the definitives and the commemoratives. He was glad to sell me individual stamps, carefully separated from the larger sheets along the perforated rows and columns. Eventually I added the Annville Post Office (17003) to my list of stops, first when my Mom would drive me there when we went ran errands, and later, when I got my driver's license. The staff there was helpful too, even cancelling a stamp on a newly issued Bicentennial two-dollar bill. As I moved around, I would often make a point of befriending a clerk or postmaster. When I moved to Nebraska, I got to know the postmaster at Gurley (69141). She was friendly, knew the news in the town, and was glad to sell me stamps for my collection. She saved all of the posters the USPS sent to her. Many were too large for her to hang in her small post office. But once the take-down date for the posters had passed, she would give them to me. I don't know what to do with them, but I still have them in my collection. Later, when I moved to York (68467), a clerk in that post office, learning that I collected stamps, told me he had a supply of commemorative sets going back a number of years. I was glad to lighten his inventory, adding to my collection of both stamps and memories.

CALENDAR OF EVENTS

REGULAR MEETING

NNMC

NOVEMBER 10TH

10:00AM

Auction meeting

NNMC

NOVEMBER 24TH 10:00AM

Consignment Sales with Presentation

Stamp Shows

Filatelic Fiesta 2012

November 9-11. San Jose, CA

<http://www.filatelicfiesta.org>

PENPEX

December 1-2 Redwood City, CA

<http://www.penpex.org>

SANDICAL

February 8-10, 2013 San Diego

<http://www.sandical.org/>

NOVAPEX 2013

March 2-3, 2013 Redding, CA

bobgrosch@frontiernet.net

Triangles indicate postage due use. In the upper left is a basic postage due cancel. The upper right has an R in the triangle, for payment of a document fee. Stamps with an A or a B, are postage due precancellations.

During the First World War, most of Belgium was occupied by German troops. The Belgian army continued to fight, often being in France. Mail from the Belgian government and Belgian forces in France was identified by special cancellations. The government mail had a circular date stamp with "LE HAVRE (SPECIAL)" at the top and "SEINE INFRE"(Department of the Lower Seine) at the bottom.

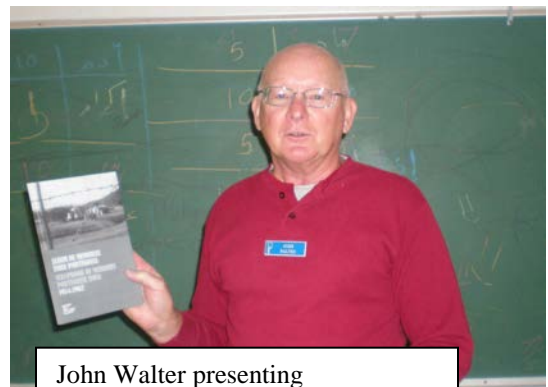
Other numbers designate the origin of the mail. Infantry divisions 1-6 used their own division number. Cavalry divisions 1 and 2 used 7 and 8 respectively. The central headquarters cancel had no side numeral.

For stamps canceled with triangles, here's much of the story. Triangles indicate postage due use. In the upper left is a basic postage due cancel. The upper right has an R in the triangle, for payment of a document fee. The lower two stamps, one with an A and the other with a B, are postage due precancellations.

The diamond-of-dots, losange, (a printer's mark) cancel had gone out of normal service long before the Liberty, Equality, Fraternity issue was released. They used it for the New Year's Day cards which were extremely popular in France at this time. This created a massive mail surge at New Year's, and all available cancels were used, no matter how old! It is a very nice strike of the cancel, so while the postal clerks may have been rushed; they took the time to do a nice job.



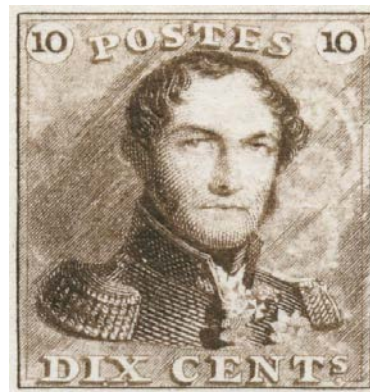
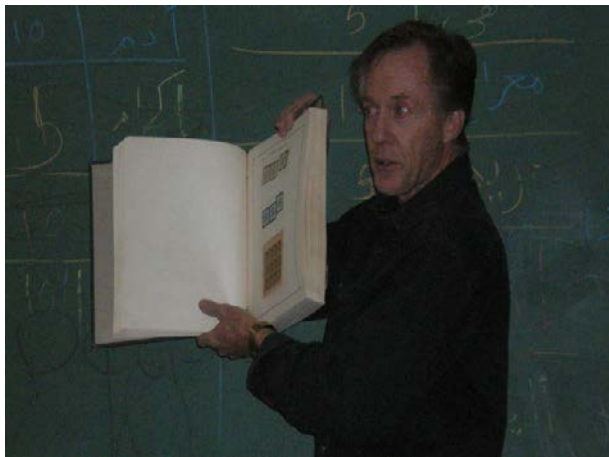
Jean Johnson presenting



John Walter presenting



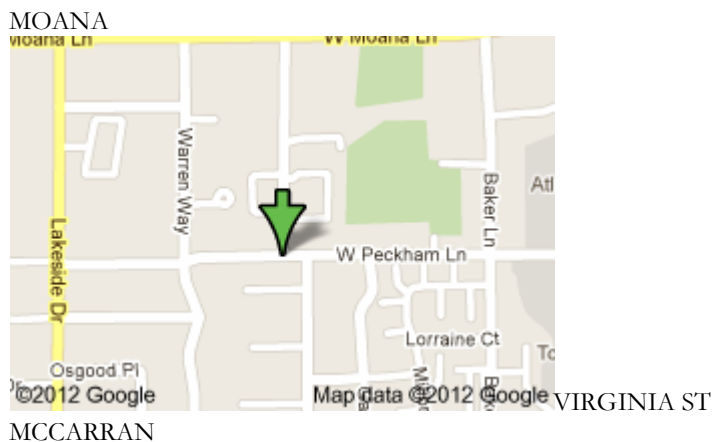
Belgium began using national postage stamps on July 8, 1849, when two imperforate stamps, a 10c. brown and 20c. blue, were introduced. A few months later a 40c red stamp with a new design was issued, for postage to foreign destinations. In 1850 two new stamps of 10c. and 20c. were issued. Stamps from Belgium are inscribed **België** (Dutch), **Belgique** (French) and very rarely **Belgien** (German).



No higher resolution available.

Steve Foster Presenting

Here is a map of where the Washoe Lodge is located. It is on Peckham Ln between Virginia St and Lakeside Dr and South of Moana Ln. The address is 601 W Peckham Ln. It is on the same street as Old Town Mall.



Philatelic Biography

Remember answer in complete sentences; add why even though I did not ask. Send to me by email, snail mail (use a nice stamp) or hand it to me and wait to see it in the PB.

1. Name
2. What do you collect?
3. How long have you been collecting?
4. What item are you most proud to have?
5. How do you organize your stamps? Albums boxes etc.
6. How many containers of stamps do you have?
7. What do you want to sell the most?
8. Where do you get most of your stamps?
9. Have you ever exhibited? Would you?
10. What is your biggest pet peeve about the post office and collecting stamps?

ADVERTISEMENTS

For Sale; Stamps and Covers at my online store at Wensy.com. Type "[artfulputz](http://artfulputz.com)" in the search box click on "user" then "go". You'll have to join but it's easier than eBay. Most prices start at 1/3 of Scott. Contact Howard at artfulputz@aol.com

ClassicNevada

Stamp & Supplies

Buy & Sell Stamps, Postcards, FDCs and Photos and Documents of Mining + Western interest **Nadiah Beekun - Philatelist**
151 N. Sierra, Reno, Nevada 89501 inside the Antiques & treasures Mall, Check out our website; Renostamps.com (775) 762-4905 classicnevada@yahoo.com

Alpine Lock and Key Inc
405 S Wells Ave
Reno, NV 89502
775-345-2574



Wanted; the 1949 Silver Wedding issue. Have you seen this stamp? There are several like it from other British colonies. I need about half of them to complete my collection. Contact Howard at (775) 677-7143 or artfulputz@aol.com



WANTED: Germany Third Reich postcards from the **Carl Werner Studios- B/W** or color, photo, or illustrated mint or used. Paying \$35.00 and up depending on subject matter and condition. Call Stan Cronwall 849-7850 or stlaine@aol.com

WANTED: Germany Third Reich "**Kinder Cards**" mint or used-these are cards showing children "playing at war" usually with some junior sized weapon, helmet and/or uniform. Most are color but some can be B/W. Most are illustrated, but some are photography. Paying \$35.00 and up depending on subject matter and condition Stan Cronwall 849-7850 or stlaine@aol.com.

WANTED: Germany Third Reich illustrated postcards by the **artist Wolfgang Willrich** -B/W or color, mint or used Paying \$35.00 and up depending on subject matter and condition. Stan Cronwall 849-7850 or stlaine@aol.com

WANTED: Germany Third Reich postcards from the **Heinrich Hoffmann Studios** (Hoffmann was Hitler's personal photographer) B/W or color, photo or illustrated, mint or used. Paying \$ 45.00 and up depending on subject matter and condition. Stan Cronwall 849-7850 or stlaine@aol.com

BENNY'S BIN

Art Deco Jewelry

One of a kind Odds & Ends Victoriana
Jacqueline Bloomquist
151 N. Sierra Reno, NV 89501
inside the Arts & Antiques Mall

Davies Stamps

Worldwide Stamps & Supplies
Discounted

Arline & Edward Davies
Owners

1631 Picetti Way (775) 835-0195
Fernley, Nevada 89408
Stamps2go.com.com,
Stamporama.com
eddavies@sbcglobal.net

WANTED - US Aerogrammes addressed and used to overseas locations. Needed: UC42, UC44, UC44a, UC46, UC49, and UC52 to UC62, UC63a and UC64 Paying up to 100% of SCV John Walter john@walter-us.net

Post Boy Quiz-Belgium

November-_____

Your Name _____

1. What two youth organizations are honored on a 1957 stamp?
a. Guides b. Boy and girl scouts c. Parrish
2. Eugene Ysaye appears on a 1958 commemorative. Who was he?
a. Pianist b. violinist/ composer c. Cellist
3. The 500th anniversary of the birth of what Pope was marked by a 1959 set of two stamps?
a. Adrian I b. Albert I c. Adrian VI
4. A 1962 commemorative was issued in memory of concentration camp victims. What did it show?
a. Two hands b. Survivors c. Bodies
5. What type airplane appears on the 1963 salute to Sabena Airlines?
a. Coronado b. Caravelle c. Skyservant
6. A self-portrait of what Belgian painter appears on a 1966 stamp?
a. Rik Woulters b. Paul Rubens c. Jan Fyt
7. What is featured on the 1972 stamp marking the 50th anniversary of the economic union of Belgium and Luxembourg?
a. letters b. stamps c. coins
8. What king appears on a 1976 souvenir sheet?
a. Baudonin b. Leopold III c. Albert II
9. What three Belgian kings appear on the 10-franc value of the 1915-20 definitives?
a. Baudonin, Leo I, Albert I b. Albert I, Leo I, Leo II c. Leo I, Albert I, Leo II
10. What three American astronauts are honored on a 1969 stamp?
a. Armstrong, Collins, Aldrin b. Carpenter, Glenn, Cooper c. Armstrong, Glenn, Collins

Bonus question: How did David Frye get to the Annville PO?

1. Demonetized
 2. Die Proofs
 3. Perforation
 4. Colors that run when wet
 5. 1934
 6. For Youth
 7. Railroad
 8. American Bank Note Company
 9. Approvals
 10. Grill
- BQ: Afghanistan

Return Address
NSSS
PO Box 2907
Sparks, NV 89432

BULK RATE
US POSTAGE
PAID
PERMIT NO.
00000

ADDRESS CORRECTION REQUESTED

Mailing Address
Street Number and Name
City, State 98765-4321