

Post Boy



Monthly newsletter of the Nevada Stamp Study Society

February 2022
Volume 55, Issue 2

In-person & Virtual meetings 2nd & 4th Saturday starting at 10:00 A.M.

Silverada Estates Clubhouse, 2301 Oddie Blvd, Reno ([map](#))

Officers:

President – James Steckley
president@renostamp.org

Vice President – Jeanne Paquin
vp@renostamp.org

Secretary – John Walter
secretary@renostamp.org

Treasurer – Erik Fields
treasurer@renostamp.org

Directors:

George Ray

Dave Gehringer

dave@renostamp.org

Howard Grenzebach
howardg@renostamp.org

Dave Parsons
davep@renostamp.org

Eric Moody
eric@renostamp.org

PB Editor & Webmaster
John Walter
editor@renostamp.org

<https://renostamp.org/>
PO Box 2907,
Sparks, NV 89432

INSIDE THIS ISSUE

1. Announcements
2. Post Boy Reporter
3. Doane Town Cancels
6. Lindbergh 1928 CAM 2 Air Mail Flights
8. Quiz – Elvis and Marilyn Together
9. Buy Want Sell Trade
10. Post Office & Library Displays

Announcements

Meetings –

February 12, 2022 – In-person and via Zoom. Meeting starts at 10 a.m. but come early to socialize and log in auction lots – 5 per member. The live auction can have up to 60 lots plus Blue Sheet donated lots. Last meeting to participate in the Linn's Stamp Poll for best and worst stamps in 2021.

February 26, 2022 – In-person and via Zoom. Meeting starts at 10 a.m. Come early to set up your consignments lots – 10 per member. After the raffle there will be a philatelic presentation.

Announcements -

The club library added the Sixth & Seventh Editions of the American Air Mail Catalogues which have 3 volumes each. They are available on loan for 2 weeks.

The Silverada Estates clubhouse distributed some of their tables to other locations. The NSSS board has allocated to purchase 6 of the 6-foot tables to remain at the current building. The cost will be about \$400. Three new tables were purchased in January so far.

The county library is re-starting their adult learning program called "Time Out Tuesday" in March. The program is geared for adults and can cover virtually any topic. Our stamp club is invited to present a program probably in May or after. It would be held on a Tuesday at 4 p.m. for an hour in the South Valleys Library meeting room. Contact **James Steckley** if you want to participate. We also need members in attendance to show interest in the stamp collecting topic.

Mark your calendar – July 23-24 for Greater Reno Stamp & Cover Show at the National Bowling Stadium, 300 N. Center St., Reno.



Post Boy Reporter

Jan. 8 meeting – Attendance was 21 members (17 in-person and 4 online via Zoom). **Erik Fields** and **James Steckley** arrived early to set up the tables and chairs. Refreshments were provided by **John Walter**.

Mike Potter reported the membership stands at 76 members. A new membership roster should be printed by the first meeting in February.

The raffle drawing was conducted by **Betty Mudge**. The drawing had 10 donated prizes along with a bonus prize won by **Scott Hansford**. Scott also won the money prize of \$8.50.

Mike Potter was the auctioneer for the live auction with **George Ray** and **Howard Grenzebach** helping. There was a total of 79 lots and 9 Blue Sheet (donation) lots for a total of 88 lots. There seemed to be a demand for the live in-person auction. A total of 51 member lots sold and all the donation lots sold for a total of 60 lots sold for \$681.30. One lot was sold to an online member.



Steve Foster looking at auction lots.

Erik Fields, as stamp show chair, is soliciting ideas or theme for show covers. James Steckley received donations from Norman Lee and **Dick Dreiling**. USPS prices will not increase until January 2023.

Jan. 22 meeting – Attendance was 28 members (22 in-person and 6 online via Zoom) and one guest, Patty Bushey. Patty inherited a collection and was looking for ideas what to do with it. “Start collecting” was the obvious answer. **Erik Fields** and **James Steckley** arrived early to setup the tables and chairs. Refreshments were provided by **Erik Fields**.

Dave Parsons reported on the Online Auction #15. There were a total of 103 lots with 75% being sold with \$562 in gross sales. Online Auction #16 will start at noon on Feb. 15 and end at noon on Feb. 24.

Volunteers are needed to help with a stamp collecting program called “Time Out Tuesday” to be held at the South Valleys Library in Reno. **James Steckley** will coordinate the class activity.

The raffle was conducted by **Betty Mudge** with 10 prizes. The bonus prize was won by **Dick Simmonds** and the money prize of \$11.00 went to **Dave Parsons**.

The philatelic program was a YouTube video discussing Mr. Zip and the history of zip codes. **Dave Gehringer** is looking for members to present short programs at the second meetings of the month.



George Ray, Howard Kadohiro and Erik Fields looking over the consignment lots.

Doane Town Cancels

By Patrick Crosby

How would you like to be so involved with a segment of stamp collecting that your name is attached to the field for generations to come? That is the legacy of Edith R. Doane who started collecting certain styles of handstamp cancelations in the 1950's.

Doane cancelations (or simply Doanes, like "bones") are impressions from rubber handstamps with three distinct styles - types 1, 2, and 3 - chronologically distributed by the United States Post Office Department (P.O.D.). They were meant for use in smaller, fourth-class post offices throughout the country and U.S. possessions. Spot a Doanes and it may be from a discontinued post office (DPO). Some larger towns also received this canceler when the postmaster requested one.

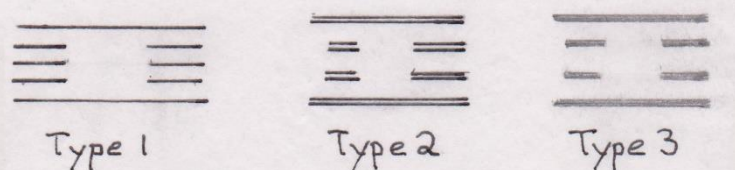
In a search for better hand marking devices for Rural Free Delivery (R.F.D.) mail carriers the first R.F.D. rubber handstamps were issued at the end of 1899. After three years they proved to be satisfactory, and with a switch from straight-line town and date information to a circle date stamp (cde) the first Doanes were issued in 1903. Examples greatly diminish after 1912, but have been seen into the 1950's.

Both the R.F.D. and all Doanes cancels included a number in the killer bars, but they had different purposes. The R.F.D. numbers indicate the carrier's route number. The Doanes numbers usually refer to the size of the post office relating to its postmaster's compensation for the previous fiscal year. If a postmaster had made less than \$100 then a "1" was used. If he had made between \$400 and \$500 then a "5" was used. Although numbers through "10" are typical, higher numbers exist. For example, for almost four years Sparks, NV, used a "15".

However, note that Doanes with "1" were also distributed to new post offices which had no previous postmaster compensation records. The cancelers typically lasted one to ten years depending on use and abuse. Doane numbers were used by the P.O.D. to determine the durability of the devices - a canceler with a "2" should last longer than a "7".

Doanes cancels were not only used as origin post office cancels, but often as receiving, forwarding, and redirecting cancels.

DOANE HANDSTAMPS	# Bars	Doane #	Dial Diameter	Dates Issued by P.O.D.	Est. Number Issued to P.O.'s	Approx. Number of Known P.O.'s
Type 1	5 thin	yes	27-29mm	1st half 1903 to	1,600	1,200
Type 2	4 pairs	yes	28-30mm	9/29/1903 to 6/30/1905	17,500	8,300
Type 3	4 fat	yes	31-32mm	7/1/1905 to fall, 1906	12,000	5,300



The three types of Doanes cancels are readily distinguishable as shown in the illustrations and described in the chart above. The quantities of Doanes distributed is staggering and there are many new towns waiting to be found.

The Doane handstamps proved to be a success. The numbers were no longer needed in the killers and about September 1906 the P.O.D. began distributing a four-bars canceler without numbers that were (sometimes confusingly) similar to a type 3 Doane. With little change, these are still issued today.



R.F.D. handstamp from Pulaski, NY rural route “1”, is a basis for the type 1 Doane from Foley, MO “3”. With a different background and stamp, the Calcium, PA (1885-1944) type 1 Doane shows well.

In 1903 the private postcard (ppc) craze was just beginning in the U.S. and many Doanes are to be found on ppc’s. Unfortunately, reading the cancel on ppc’s can be a challenge, especially with the often-seen dark green 1¢ Franklin postage stamp (Sc. 300) making the Doane number sometimes unreadable. Yes, clear complete cancels are not the norm. As far as government issued postal cards, Doanes examples are mostly found on the 1¢, side-facing McKinley card (Sc. UX18, UPSS S22) of 1902, and also the McKinley cards of 1907 and 1908.



Type 2: The Gilbert, PA (1868-date) cancel is a near perfect strike for a postcard. The “2” indicates a small post office, and the community of about 450 people today remains small. The Meyers, CA “1” post office (in the South Lake Tahoe area) is in operation today, and the card is part of my El Dorado Co., CA, collection.



Type 3: Prospectville, PA, “2” is a DPO (1854-1967) and its Doane was used for almost six years. Slattington, CA, also in El Dorado Co., used a type 2 Doane with “2” until 1908 when a type 3 Doane with “3” was added and used until the end of 1909. The post office closed in 1920.



Dials can change size and shape if left too close to a heat source as seen on the Westcreek, NJ “4” type 2 Doane. As seen, type 2’s narrow pairs can fill in. Unsure of the Doane #? Reference www.doane.com. The Chester, NH cancel sandwiches this article with an R.F.D. four-bars cancel.

With over 31,000 Doanes town possibilities, someone had to start somewhere. Way to go, Edith.

References:

- Richard W. Helbock, Postmarks on Postcards Revised Second Edition (Tarpon Springs, FL: Marrakech Express, 2002) [Although it says Postcards, this is an excellent introduction to and reference for collecting postal history on any type of cover. Available on Kindle at Amazon.com].
- Gary Anderson, Doane Cancels (www.doanecancels.com). The website lists Doanes by states, each town’s know usage dates, and with each state having an individual to contact with new information – and it’s free!
- Richard W. Helbock, United States Post Offices Vol. IV – The Northeast (Scappoose, OR, La Posta Publications, 2001).

Patrick Crosby is a member of the Nevada Stamp Study Society and collects U.S. postal stationery, stamps and post-cards with an emphasis on postal history.

Lindbergh 1928 CAM 2 Air Mail Flights

By Tom Reyman

Before Charles Lindbergh completed his historic New York to Paris flight in 1927, he had spent some time developing and flying the Contract Air Mail Route #2 (CAM 2) Air Mail route between Chicago and St. Louis. On April 15, 1926, the CAM 2 flights started using a fleet of four World War I surplus de Havilland DH-4 biplanes. The CAM 2 flight team consisted of Lindbergh and three other pilots.

After his famous cross-Atlantic flight in 1927, Charles Lindbergh used his new-found fame as a world-renowned aviator to promote the benefits of air mail service. Air Mail volume increased by over 50% in the months following the historic flight. He completed several tours in the United States and in Latin America and the Caribbean to publicize aircraft and air mail.

In February of 1928, Lindbergh requested and received approval from the United States Post Office to pilot aircraft on the CAM 2 route that he had helped develop. When the proposed flight was announced, many thousands of souvenir covers were sent to Chicago and St. Louis to be flown on Lindbergh's airplane. The large volume of mail necessitated the use of four aircraft to manage the volume. At each stop along the route (Peoria and Springfield, Illinois), Lindbergh would switch aircraft so that each cover could be claimed to have been flown by him.

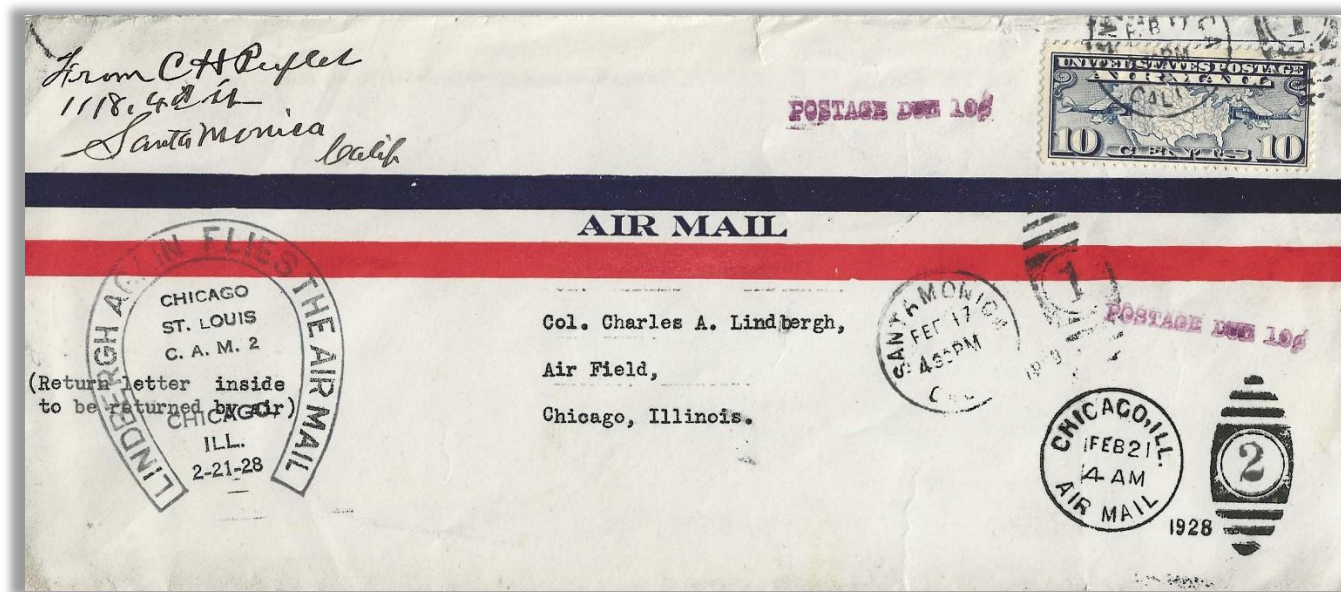
These are three of the many CAM 2 covers that flew on the February 20 and 21, 1928 flights between Chicago and St. Louis.



This cover was appropriately posted with the U.S. C10 stamp showing the Spirit of St. Louis airplane that Lindbergh used on his historic flight. This is the Northbound flight on Feb. 20.



This Southbound flight cover from Feb. 21 is franked with the unusual combination of the U.S. 629 “Battle of White Plains” stamp and the C4 air mail stamp to make up the required 10 cents postage.



This large envelope cover was sent by air mail from Santa Monica, California to Chicago to be carried on the Southbound Lindbergh flight on Feb. 21 from Chicago to St. Louis. Since there were two flight legs, the one 10 cent stamp was insufficient postage, and the Post Office assessed a 10 cent Postage Due penalty. Presumably, the sender was pleased to pay the extra fee just to have the cover returned to him.

Tom Reyman is a Nevada Stamp Study Society member whose collecting interests are U.S. FAM covers, general Air Mail covers, Canadian Semi-Official Air Mail stamps and covers, and Cape Breton (Nova Scotia) covers.

February Quiz - Elvis and Marilyn Together... Again... And Again...

By Eric Moody

Iconic American entertainment figures Elvis Presley and Marilyn Monroe have appeared on the stamps of many countries, especially those known for their marketing of eye-catching issues aimed at collectors. All the correct answers in this quiz involve countries that have issued stamps featuring both Elvis and Marilyn – at least one time each.

1. The U.S. released a Marilyn Monroe stamp in 1995 (Scott #2967). It was part of the series
(a) Stars of the Silver Screen (b) Legends of Hollywood (c) Performing Arts (d) Famous Americans
2. World record holder? This country has issued more than 50 Elvis Presley stamps and more than 20 stamps featuring Marilyn Monroe, beginning in the early 1990s. It is
(a) St. Vincent (b) Guyana (c) Gambia (d) Tanzania
3. A 1968 U.S. television special starring Elvis was commemorated in a 3-stamp set (#652) released by this country in 1998.
(a) Marshall Islands (b) Micronesia (c) Senegal (d) Grenada
4. This philatelically prolific, though thinly populated, country produced large sets of stamps for both Elvis (#2228a-i – 2232) and Marilyn in 1995.
(a) Togo (b) Nevis (c) Mongolia (d) Iceland
5. The predominant color of this vivid U.S. Elvis Presley commemorative of 1992 (#2721) is
(a) Yellow (b) Blue (c) Gold (d) Pink
6. This island produced a unique stamp (#861) in 1995 that featured both Elvis and Marilyn. The island, which has also issued separate stamps for these celebrities, is
(a) Madagascar (b) Montserrat (c) St. Vincent (d) Nevis
7. A former British colony, this place included both Elvis and Marilyn (#2213-2214) in an “Entertainers” set of stamps in 1995.
(a) Hong Kong (b) St. Vincent (c) Ghana (d) Mauritius
8. In 2004 this country issued a souvenir sheet of six stamps (#2903) that alternated images of Elvis with pictures of teddy bears.
(a) Liberia (b) Gambia (c) Mongolia (d) Bhutan
9. Marilyn Monroe is pictured in a scene from the 1953 movie *Niagara* on a stamp (#2226) from this Asian country.
(a) Japan (b) Bhutan (c) Mongolia (d) India
10. A onetime Portuguese colony, this African country issued a set of “Movie Star” stamps in 1994 that included Elvis (#1165c) and Marilyn. The country is
(a) Angola (b) St. Thomas and Prince Islands (c) Mozambique (d) Guinea-Bissau

11. In 2004 an Indian Ocean nation issued stamps commemorating Americans Babe Ruth and Marilyn Monroe (Elvis got a dozen stamps the next year!). The country is
(a) Maldives (b) Seychelles (c) Mauritius (d) Madagascar
12. Both Elvis Presley and Marilyn Monroe were featured in this African nation's "Stars of American Cinema" 9-stamp set (#951) in 1997. The set was issued by
(a) Togo (b) Senegal (c) Niger (d) Ghana

The February quiz is worth 120 **Auction Bucks**. Please complete the quiz and give your answers to **Betty Mudge** at the next in-person meeting or email to:

postboyquiz@renostamp.org

Jan. Quiz Answers: 1. d 2. d 3. a & c 4. d 5. b 6. c 7. b 8. c 9. d 10. a 11. c 12. b
--

Buy Want Sell Trade

Buy and Sell - almost anything philatelic and ephemera. This includes stamps, post cards, FDCs, photos and documents of mining, and Western interest. Plus selling philatelic supplies. Contact member **Nadiah Beekun** at (775) 762-4905, <http://www.RenoStamps.com> or email: classicnevada@yahoo.com.

Buying: Stamp Collections Worldwide & United States, Large or Small Estate. Postal History, Post Cards, Ephemera, Stock Certificates, Checks, Old Business Ledgers and Billheads, Mining Lumber, Staging & Express, Pony Express, California Gold Rush. Photographs 1840's - 1920's, California & Nevada Oil Paintings, anything Rare from California or Nevada History... Contact member **Mark Baker** 530-417-1117 or Email Mark@goldrushpaper.com.

Wanted: U.S. aerogramme: #UC52 - must be used and addressed to an overseas address. Contact member **John Walter**, email: walter60@gmail.com.

Wanted: Articles for the Post Boy newsletter. How about a short story on some of your favorite items, recent purchases, country, or topic you are working on, etc. Submit article to editor@renostamp.org

APS Estate Advisory Service Volunteer Needed for Local Area

Members are needed to assist heirs of American Philatelic Society members who passed away within the previous year. Volunteers should be comfortable with offering advice to the heirs on how to maintain, store or dispose of the philatelic collection that has been left behind. If you would be interested in serving the hobby in this capacity or would like information please contact Ken Martin, kpmartin@stamps.org, 814-933-3817 ext. 205. Much information on the service is provided by APS to the volunteer.

Paul Glass was our local volunteer until his passing in 2020.

Library and Vassar Post Office Displays

By John Walter

South Valleys Library allowed the stamp club to use all their display cases in January and February.



On the left is one of the display cases at the Vassar post office with February display showing Love stamps for Valentine's Day and Olympic stamps for the Winter Olympics.